

WRC38

WIRE CRIMPED STEEL

iNFORCE WCR38 is a 38mm steel fibre for concrete, recommended for industrial applications as superior to mesh.

Wire Crimped Steel fibre is made of low carbon cold drawn steel and has a minimum tensile strength of over 700Mpa. The fibre contains deformations that run the full length of the fibre and give an incredible mechanical bond to the concrete matrix. WRC fibre provides a uniform distribution of reinforcement throughout the concrete that increases the tensile strength, impact resistance, shear strength, and ductility of the concrete.

No sophisticated or expensive equipment is required to achieve uniform, ball free distribution of WRC fibre in the concrete matrix. The undulations along the fibre length provide mechanical anchorage to the concrete, enhancing post first-crack strength.

TECHNICAL INFORMATION

WRC FIBRE

ASTM Specification	ASTM A820 Type I
Material Type	Low carbon, drawn wire
Tensile Strength	Min. 700Mpa
Deformations	Full length deformed circular segment
Appearance	Bright and clean

FIBRE SELECTION GUIDE

Fibre	Length	Equiv. Diam.	Aspect Ratio I/D	Application
WRC25	25mm (1")	0.85mm	30	Dry mix shotcrete
WRC38	38mm (1.5")	0.85mm	45	Ground slabs and pre-cast
WRC50	50mm (2")	0.85mm	60	Industrial or commercial floors, airports, roads, bridges, decks



KEY BENEFITS

- Ease of handling.
- Possibilities of wider joint spacing giving larger slabs. Save on joint forming and joint maintenance costs.
- Top to bottom slab reinforcement giving far superior strength and greater crack, impact and fatigue resistance.
- Dramatically speeds up construction and reduces labour time by completely eliminating the need for steel mesh reinforcement.

PACKING

- 20kg paper (polyline) bags.

SAFETY

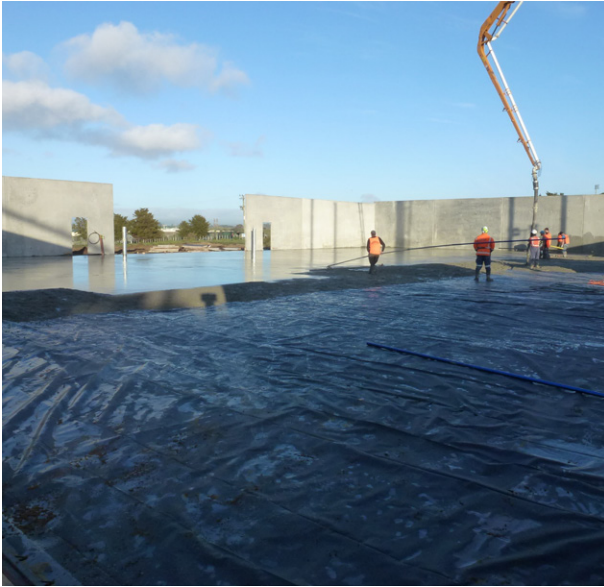
- We recommend that gloves and eye protection be used when handling or adding fibres.

WRC38 AT WORK

TECHNICAL CASE-STUDIES

TUI GARDEN

LARGE 30M X 25M SLABS WITHOUT SAWCUTS



AVON PRECINCT

CHRISTCHURCH CENTRAL EARTHQUAKE REBUILD

