

## CONFERENCE REVIEW: IPWEA CONFERENCE, GOLD COAST AU

Was great to be at the IPWEA Asset Management conference on the Gold Coast on the 14th and 15th of June and meet with key people from the Australian Local Government sector.

The challenges faced by local Government are very similar in both NZ and Australia and one of the biggest seem to be that of matching budgets to public expectation of service and delivery. Innovation is going to be key to bridging this divide and it was great to see and hear of the active uptake of innovation by the Local Government bodies in Australia.

Inforce was exhibiting the ACE fibre for reinforcing asphalt and holding educational talks with many asset managers who are looking to get longer life from their pavements. We are excited to get our first laydown of asphalt reinforced with fibre in Australasia at the end of this quarter and was great to see the interest it that project, with many expressing an interest to look at adopting the technology in their areas also.

Providing significant reduction in cracking and rutting, ACE fibre not only extends the life of pavements, but offers the opportunity to reduce co2 emissions by up to 96% compared with using a liquid polymer binder (PMB's) and achieving the same or better performance. Inforce provided free barista coffee for the event by sponsoring the coffee cart and was



great seeing the pink dot in many hands around the conference!

We are up next at the National Roads and Traffic in Sydney on the 11th and 12th of October and then at the AFPA conference in Brisbane on the 30th and 31st October – so book a seat and come talk to us there!



**INFORCE**  
SIMPLIFY WITH CONFIDENCE.

#12

JUNE 2023

**INFORMER**  
YOUR QUARTERLY FRC NEWS & TECHNICAL UPDATE FROM INFORCE

## PROJECT REVIEW: T&G PACKHOUSE, HASTINGS NZ



INFORCE is pleased to have partnered with First Principles Constructors (FPC) on another primary sector facility. This project featured a high-capacity packhouse, along with a packaging store and amenities block, all thoughtfully integrated to cater to diverse operational needs.

Working closely with FPC, we designed the floor layout aimed at optimizing construction efficiency, ensuring superior durability, and minimizing the number of floor joints.

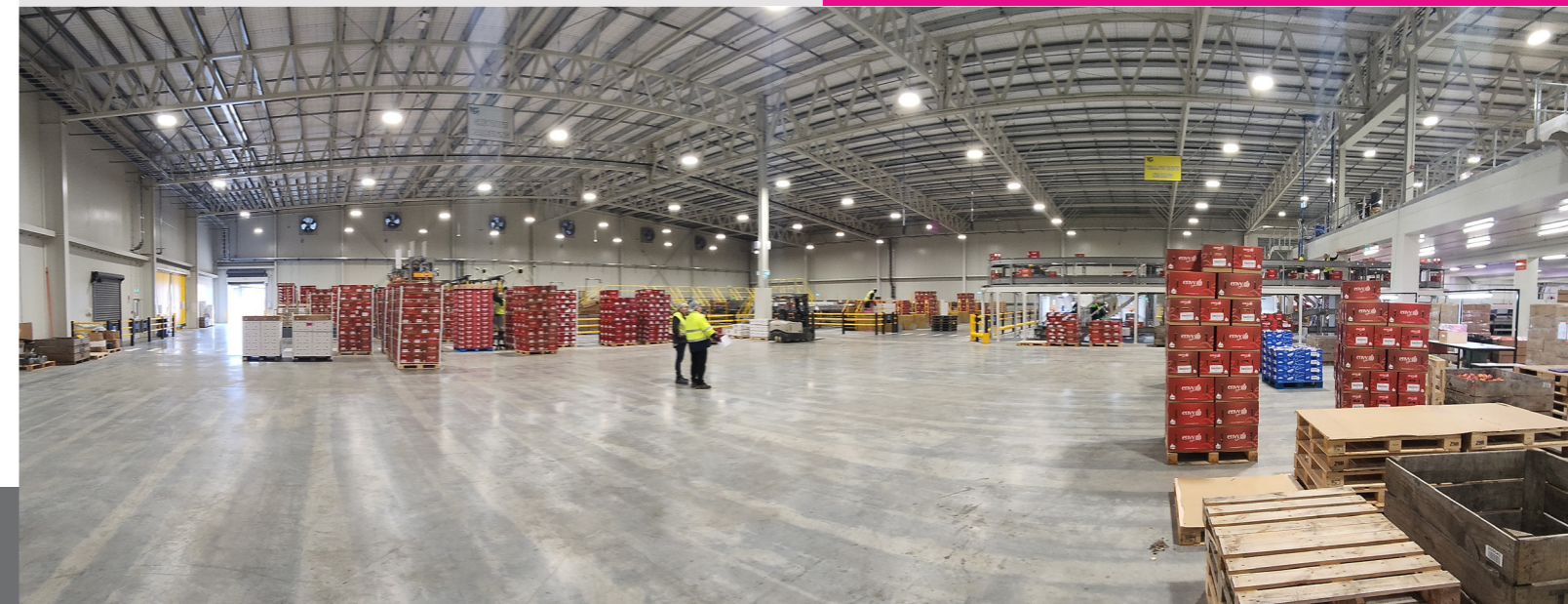
Notably, a designated area had to meet requirements for carton handling robots capable of withstanding torsion loads. This facility is believed to be the largest of its kind in the Southern Hemisphere.

The superior durability of the fibre concrete floor makes it an ideal choice for areas subjected to intense forklift traffic found in large-scale fruit handling operations.



This project serves as a prime example of the value INFORCE brings to designers and constructors of large-scale facilities across New Zealand and Australia.

- *Jointless slab*
- *Proforce Steel Fiber*
- *Aprox 10,000m2 slab*
- *No saw cuts*





## UNDER CONSTRUCTION: AKURA, NSW



Other organisations in the Shepparton region were impressed with the speed of delivery, iNFORCE are proud to be a part of this successful project.

Akura, a construction company based in Central-west NSW, are a leader when it comes to innovation and they wanted a low maintenance concrete solution to provide tenants with the optimum slab.

### OUR SOLUTION

iNFORCE were engaged to assist with the slab design on a self-performed development project in Shepparton Victoria. The iNFORCE team in Australia went above and beyond to support Akura, the concrete contractor, and the concrete plant all the way through to completion.

There was over 2400m<sup>2</sup> of internal steel fibre reinforced concrete floors, and over 2000m<sup>2</sup> of external pavement reinforced with our Radforce structural synthetic fibre.



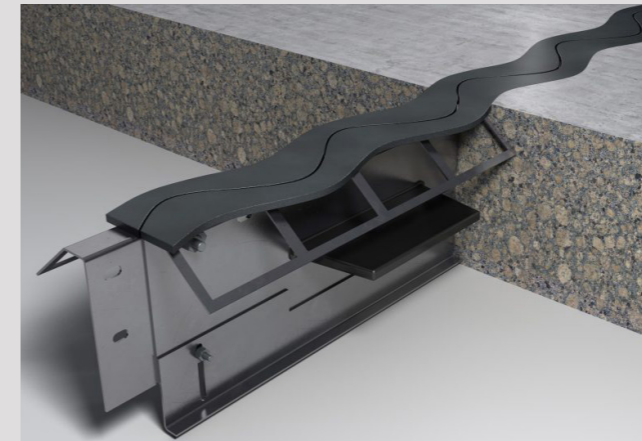
- Over 2400m<sup>2</sup> internal, 2000m<sup>2</sup> external
- Substantial cost reduction
- Faster setup
- Direct discharge from the trucks, no pumping required



## LEARN WITH INFORCE: THE IMPORTANCE OF LOAD TRANSFER AND JOINTS IN A SLAB

**We often get asked why we put so much emphasis on joint layout and joint type in our slab designs. There's a specific reason for this: the joint is one of the weakest elements in a slab or pavement design.**

Unless it's properly protected, the joint will become not only a major long term maintenance issue but also a point in the slab that creates a rough and noisy crossing for your materials handling equipment.



Adequate load transfer at the joints in the slab is critical to the long term durability of the overall floor. Poor load transfer means that adjacent panels will deflect independently under an applied load, producing an uneven floor. This in turn will cause further damage to both the floor and material handling equipment.



In highmovement environments, we recommend using a steel armoured joint. These joints can open up sufficiently without creating a void that will cause unnecessary jolting or noise when trafficked by machinery. We have partnered with RCR Flooring and Permaban, one of the largest concrete construction product suppliers in the world, to provide our clients with the necessary support in ensuring their facility has the best possible jointing system that will serve its purpose for the lifetime of the building.

## MEET THE TEAM: GLENDA LEWIS

Bringing over 15 years' of international experience as a CFO, Glenda ensures that iNFORCE is ahead of the game with their strategic initiatives and financial performance.



**Ready to discuss your project? Reach out to our team for advice and support.**