

#17 MAY 2025

# INFORMER

YOUR QUARTERLY FRC NEWS & TECHNICAL UPDATE FROM INFORCE

## LIQUID BRANDS

HIGH-PERFORMANCE JOINTLESS SLAB SOLUTION FOR A PREMIUM DISTRIBUTION FACILITY

Liquid Brands is a premier distributor of high-quality fashion, footwear, and lifestyle brands throughout New Zealand. With a strong reputation for excellence and efficiency in the retail supply chain, their operations are supported by a modern head office and distribution centre located in Islington, Christchurch.

### Project Overview

#### Optimising Floor Design for Performance and Longevity

As part of their commitment to operational excellence, Liquid Brands required a robust flooring solution for their new 2,500m<sup>2</sup> warehouse facility. The key design requirement was to minimise the number of joints within the slab-requesting no more than one joint throughout the internal floor area. This demand reflected the client's focus on long-term durability, reduced maintenance, and seamless operational flow within the facility.

LOCATION:	Christchurch
CONTRACTOR:	Wyatt Construction
PROJECT SIZE:	2,549 m <sup>2</sup>
COMPLETED:	2024

### Our Solution

To meet these specific needs, we engineered and delivered a fibre-only, jointless concrete slab. The final design comprised a 175mm-thick slab, divided into just two expansive panels measuring 35m x 28m each. By eliminating saw cuts entirely, the slab offered a highly durable, low-maintenance surface capable of withstanding the daily demands of a high-traffic logistics environment.

#### Canopy Slab Design

In addition to the internal floor, we also constructed the external canopy slab, which plays a critical role in supporting container loading and unloading operations. This slab was designed as a 150mm-thick Hybrid slab, incorporating a single layer of mesh reinforcement. Like the internal slab, it was also constructed without saw cuts, providing a clean, strong, and resilient surface suited to heavy-duty use.

#### Client Feedback and Collaboration

The construction company and client both responded very positively to the design. Our team provided a highly detailed and clearly documented design package, which streamlined the construction process and ensured clarity at every stage. The project stands as a testament to the value of precision engineering, clear communication, and performance-driven design in industrial flooring. By aligning innovative engineering with the operational needs of Liquid Brands, we delivered a high-performance, low-maintenance flooring solution that supports the company's logistics efficiency and long-term facility value.





# MERCER MUSHROOMS

LARGE-SCALE REDEVELOPMENT  
FEATURING FIBRE-REINFORCED  
SLAB DESIGN

**Mercer Mushrooms is a well-established mushroom production facility located in the Tuakau district, with a long-standing history of supplying high-quality produce. Under new ownership, the facility recently underwent a significant redevelopment aimed at modernising operations and expanding production capacity, while ensuring compliance with environmental and community standards.**



## Project Overview

### Enhancing Infrastructure for High-Volume Agricultural Output

A critical component of the redevelopment was the construction of a new compost production area. Given the nature of mushroom cultivation, this area required careful planning to manage odour control and ensure minimal impact on neighbouring properties. The facility needed a durable and efficient flooring system to support intensive operations across multiple work zones.



## Our Solution

We designed and delivered over 10,000m<sup>2</sup> of high-performance concrete slabs, tailored to the specific needs of the project. The scope included pre-wet areas, composting tunnels, hardstands, and scrubber rooms. A fibre-reinforced, joint-optimised slab design from Inforce was selected to maximise efficiency, durability, and cost-effectiveness.

The slab was engineered with speed of construction in mind, as well as long-term resilience against corrosion and wear. This enabled the facility to remain future-proof while accommodating the rigorous daily demands of mushroom production.

## Why Inforce

The decision to use Inforce fibre-reinforced concrete was based on a combination of factors: fast installation timelines, minimised maintenance requirements, and enhanced structural performance. The owner, having had prior positive experiences with fibre concrete in past developments, recognised its advantages and was confident in selecting it again for this major redevelopment.

## Project Outcomes

The result is a state-of-the-art agricultural facility that is now fully operational and producing significant volumes of mushrooms for both domestic consumption and export markets. The flooring solution met and exceeded expectations for durability, corrosion resistance, and overall performance-positioning Mercer Mushrooms as a leader in modern mushroom production.

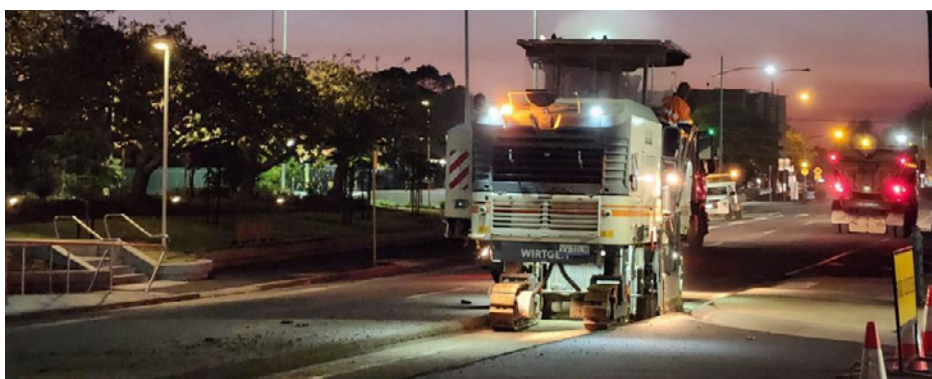
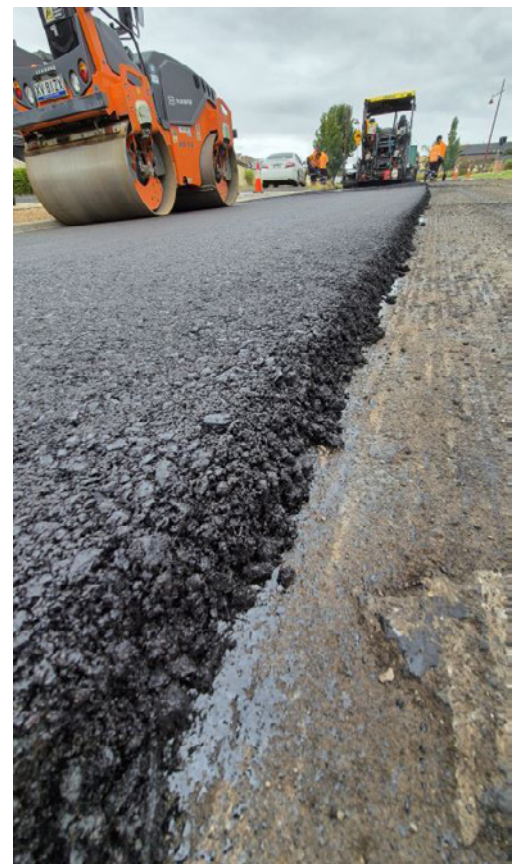
This project highlights how thoughtful engineering, combined with proven construction materials and techniques, can deliver long-term value and performance for even the most demanding industrial environments.



# ACE XP PROJECTS AUSTRALIA

We have been busy in Australia with more clients choosing to reinforce their Asphalt with Aramid fibres to reduce cracking and rutting in their road networks. Here are some recent projects.

CLIENT	STATE	DATE	PRODUCER	PAVING CONTRACTOR	ASPHALT MIX
City of Salisbury	SA	Various	Fulton Hogan	Fulton Hogan	AC10 + AC14, C320 + A5E
Banyule Council	VIC	Mar-24	Asphaltech	Asphaltech	AC10 C320
La Trobe City Council	VIC	Mar-24	Fowlers Asphalt	Fowlers Asphalt	AC20 A10E
Sunshine Coast Council	QLD	Oct-24	Boral Asphalt	Allens Asphalt	AC14 C320
Woollahra Council	NSW	Jan-25	Boral Asphalt	Stateline Asphalt	AC10M A15E
Transport Main Roads - Toowoomba	QLD	Feb-25	Boral Asphalt	Boral Asphalt	AC20 C600
Melton City Council	VIC	Apr-25	Citywide Asphalt	Central Asphalt	AC10 A10E



## WELCOMING **ARAN ROONEY!**

We are delighted to welcome Aran Rooney to the team. Aran comes from a Technical Project Management and Recruiting background with large global companies. His in depth knowledge of branding, marketing and business development means he adds a dynamic approach to our marketing department. An Irish native, he now calls Westport home and when he's not in the office you'll find him scouring the coastline in search of surfable waves.

When we asked why Westport? His answer was: "My family is from the wet windy west coast of Ireland with sheer cliffs and open fields. Coming from a small community I feel very at home here, everyone is happy to row in together and the sense of community is real. Plus I've got access to amazing surf usually only shared with one or two people or the odd dolphin." Aran is our hub for marketing information if there is anything about Inforce you would like to learn more about Aran is always happy to have a chat.



## On 1<sup>st</sup> April, **Inforce acquired Casta**

With over 25 years' experience, this merger strengthens our ability to provide easy access to the same reliable products & comprehensive support, from design and product supply to onsite assistance, ensuring more efficient and durable solutions for your projects.



**Same team. Same Service. New Look.**

NZ: 0800 463 672  
AU: 1800 370 856  
[www.inforceglobal.com](http://www.inforceglobal.com)  
[info@inforceglobal.com](mailto:info@inforceglobal.com)

**iNFORCE**  
OPTIMISE WITH CONFIDENCE.